

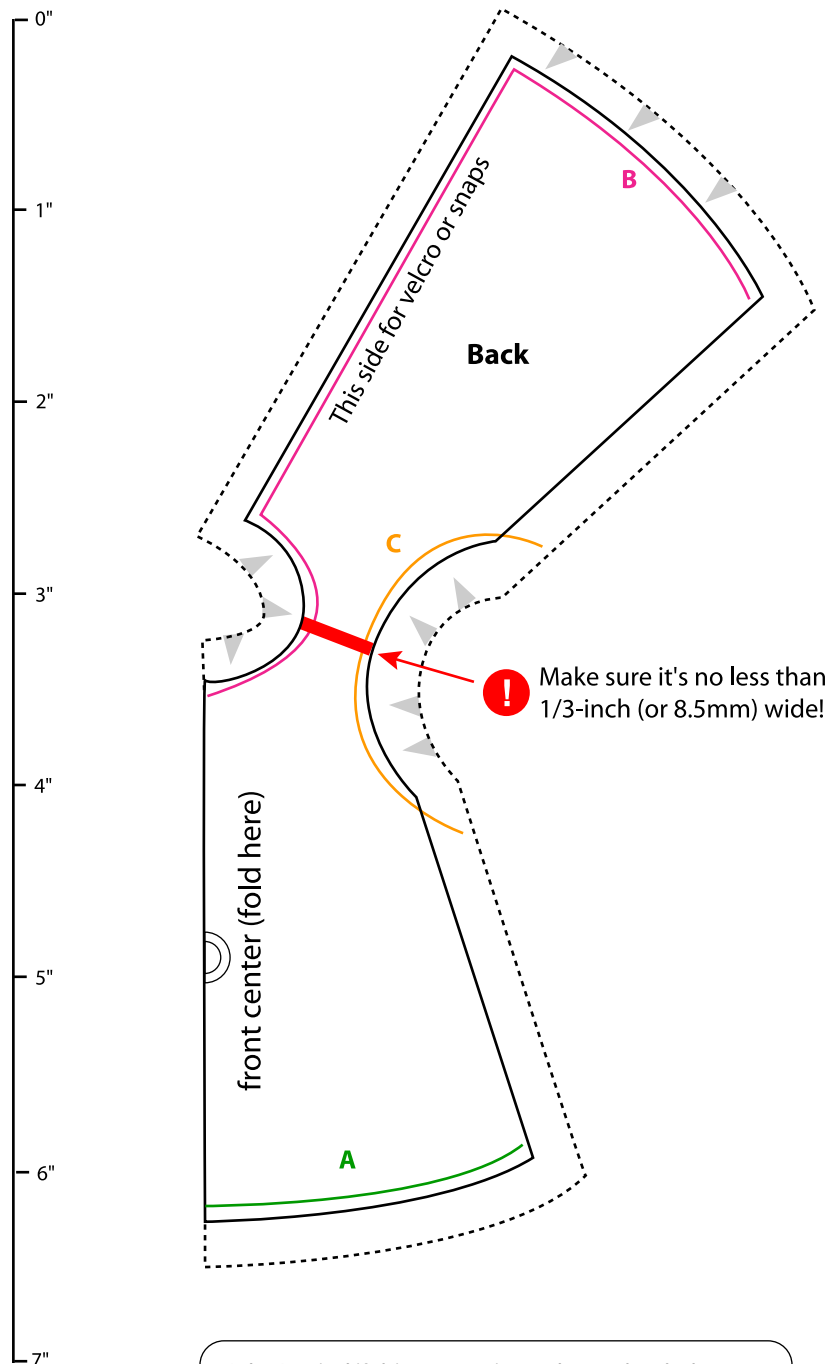
Basic A-line Dress

for LaTi Yellow Doll

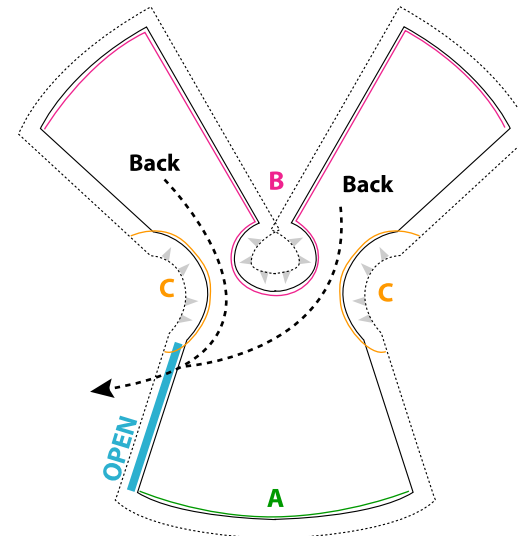
pattern ©2007 xoxoBlythe.com/PuchiCollective.com

Instructions:

Cut out two matching pieces - one for outside and one for lining. Put right side facing right side, and sew together A, then along B, then around the armholes, C. Snip the curved parts around the armholes, neckhole and hem.



I don't mind if this pattern is used to make clothes for sale, but please credit xoxoBlythe.com/PuchiCollective.com if you do. Thanks!



Here's the tricky part:

From one of the open sides, turn out the back pieces from the shoulders and flip the whole dress right-side out. You might want to get a pair of tweezers or a crochet hook to help you. This is why the shoulder straps cannot be smaller than 1/3" wide! After the dress is right-side out, press.

Sew the sides together, attach snaps or velcro and you're done! Have fun with this basic dress - add ric-rac, pompom trim, pockets, buttons, bows, etc... to make it unique and one-of-a-kind.

Tip: use THIN, tight-woven cotton fabric to save yourself a lot of trouble while turning it right-side out.

HAVE FUN! ^_^
xo, Linda